



CATALOGUE 2025

VIAL

High-Performance Aluminium Systems
Advanced solutions for modern architecture

Phone: +30 6958476520

Mail: ap@vialdw.co.uk

Website: www.vialdw.co.uk

Address:

2nd Floor, 10-12
Bourlet Close,
London, W1W 7BR

Explore Our Products



Why Choose VIAL?

VIAL's aluminium systems provide cutting-edge performance, sleek aesthetics, and superior durability. Designed to meet the highest European standards, our solutions are ideal for residential, commercial, and high-end architectural projects.

Key Advantages:

Exceptional thermal insulation –

Lower energy costs and better comfort.

Minimalist design – Slim profiles for maximised natural light and seamless views.

High security – Advanced locking systems and durable materials.

Excellent weather resistance –

Protection from wind, rain, and extreme temperatures.

Flexible configurations – Solutions for windows, doors, sliding, and folding systems.



About *Vial* & the Vial Range

Vial is known for meticulous craftsmanship and a steadfast commitment to quality. The Vial range embodies this ethos, featuring modern, high-performance aluminum systems recognised for sophisticated engineering, minimalist lines, and exceptional durability. Every product is designed to meet demanding architectural needs while enhancing comfort, style, and sustainability.

Product Range

Product Collection & Technical Specifications

Below are the key systems in the Vial range, each with its own performance data and certification details. Actual results may vary depending on configuration, glazing choices, and installation conditions.

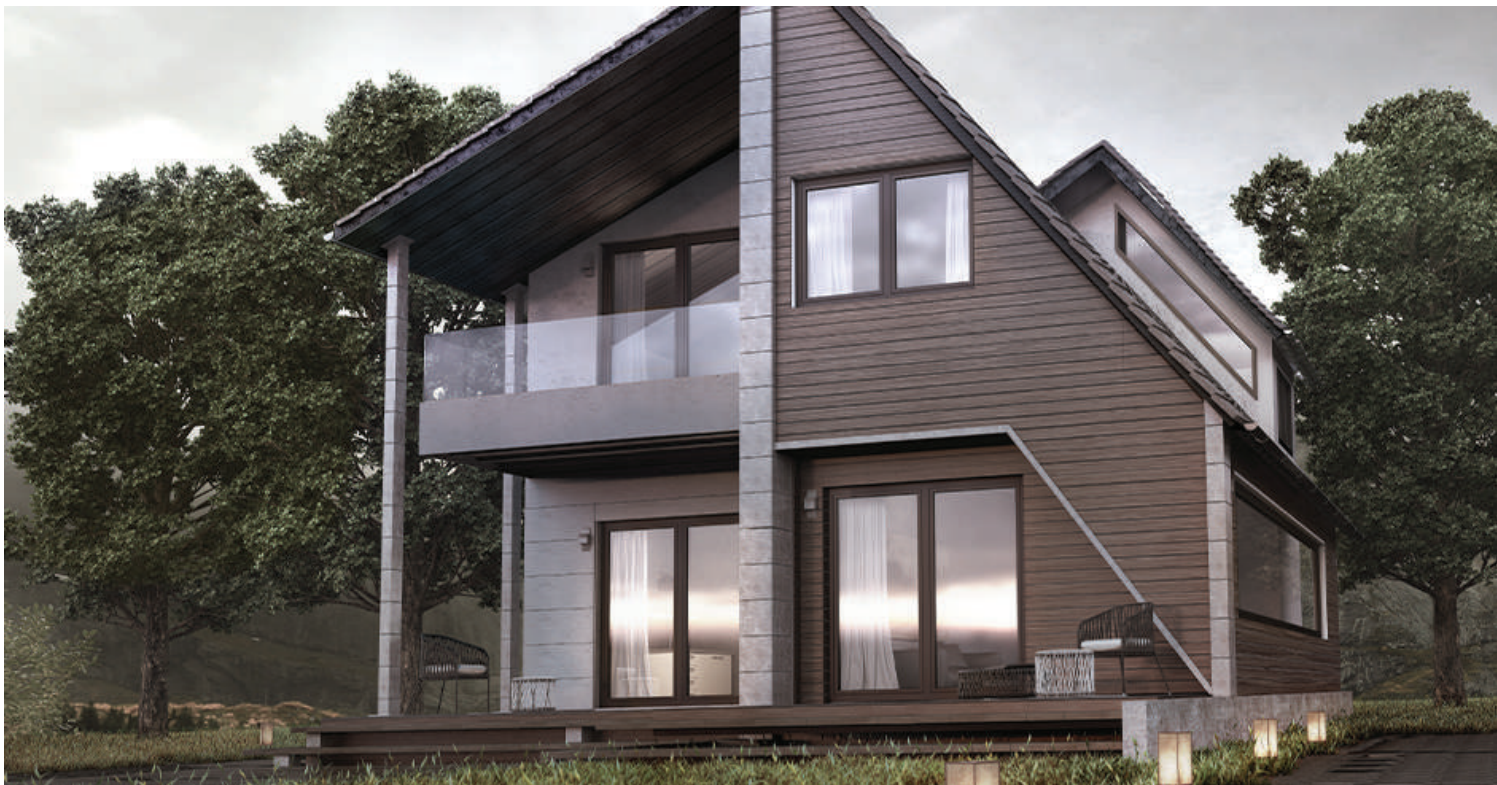
Opening Frames:

VS67 – HINGED INSULATED SYSTEM

- High standards that offer high levels of thermal insulation, air, watertightness & wind load resistance.
- 3 levels of watertightness with EPDM gaskets.
- High waterproofing level

VS77 – HINGED INSULATED SYSTEM

- Flat, modern design for a sleek aesthetic.
- Concealed sash and fittings for a minimalist look.
- Superior insulation & weatherproofing, ideal for demanding projects.
- Enhanced sound reduction, ensuring comfort in any environment.





Sliding Frames:

VS450 – Sliding and Lift & Slide Insulated System

- High thermal insulation with patented thermally efficient typologies.
- Easy to clean frame, with invisible water evacuation and less visible depth.
- It is ideal for new buildings and renovations, as it provides flexibility of construction and a wide variety of typologies.

VS650 - Ideal Solution for Projects Requiring Wide Spans

- Enhanced natural light thanks to the system's minimal design and the wide glazing surfaces.
- Exceptional sound insulation.
- Maximum ease of use and high functionality.
- Ease of access according to specifications for people with special needs and children.
- Wide variety of typologies.
- Ideal for wide spans.

VS700 – Ultimate Sliding Solution

- Alternative solution for totally concealed in-floor installation, covered with the floor finish (version SUPREME VS700 Eclipse).
- High energy efficiency with special anti-distortion polyamides, for improved performance when there are high temperature differences between indoors and outdoors.
- Smart water evacuation system that guarantees watertightness under any weather condition.

Folding Frames:

VS85 – Insulated Bi-Folding System

- Extreme performance in terms of water tightness, air permeability, and wind load resistance.
- Enhanced safety and burglary protection, with quadruple locking latches and anti-lift roller hinges (RC2 certified).
- Ultra smooth and long-lasting operation.

VM65 / VM6500 – Folding Door System

- Minimalist, bottom-slide operation for seamless indoor-outdoor transitions.
- Slim aluminium profiles (88mm) to maximise natural light.
- Highly secure, with robust multi-locking options.
- Thermally insulated version (MF65) available, achieving U-values up to 1.1 W/m²K.
- Customisable configurations, including low-threshold options for accessibility.





Entrance Doors:

SD77 - System for quality entrance doors requiring modern design, high performance and emphasis on safety

- High energy savings thanks to exceptional energy efficiency.
- High security level.
- Modern design.
- Ease of use and high functionality.

Trusted Installation Partners in the UK

VIAL collaborates with four trusted installer partners across the UK to ensure seamless project execution and professional service.

Local UK Partners

We partner with a select group of expert installers who specialise in fitting and supporting these premium systems. They are ready to assist you and would be delighted to discuss your project—feel free to give them a call!

Bespoke Frames (Cheshire)

Website: <https://bespokeframescheshire.co.uk/>

Phone: 01925 933 080

Email: showroom@bespokeframescheshire.co.uk

Associated Glass

Website: <https://associatedglass.co.uk/>

Phone: 020 8508 3821

Email: info@associatedglass.co.uk

Creative Homestyle

Website: <https://creative-homestyle.co.uk>

Phone: 0800 246 1463

Email: info@creative-homestyle.co.uk

Everhaus Windows

Website: <https://www.everhauswindows.co.uk/>

Phone: 07572 999 979

Email: hello@everhaus.co.uk

Bespoke Frames (Cheshire)

Discover the finest architectural frames for your domestic or commercial projects with Bespoke Frames of Cheshire. Located in Warrington, they are experts in architectural glazing.



Associated Glass

Associated Glass is one of the most experienced and reputable businesses in the Loughton Essex area. Established in 1989, Associated Glass has evolved to become the first choice window and door installation services / companies / installers in Essex.



Creative Homestyle

Creative Homestyle are a Worcestershire family-run business with over 40 years of experience. From consultation to finish touches, they can turn your home dreams into reality.



Everhaus Windows

At Everhaus Windows, they're passionate about designing aluminium framing systems that redefine modern spaces. Based in Yorkshire, they bring decades of expertise in creating windows and doors that enhance aesthetics, improve energy efficiency, and elevate comfort.





Ready to Elevate Your Space?

Choose VIAL's cutting-edge aluminium systems for unparalleled performance, security, and design flexibility. Contact us today!

CATALOGUE 2025

VIAL

High-Performance Aluminium Systems
Advanced solutions for modern architecture

Phone: +30 6958476520

Mail: ap@vialdw.co.uk

Website: www.vialdw.co.uk

Address:

2nd Floor, 10-12
Bourlet Close,
London, W1W 7BR